

**RBMX Antibody - C-terminal region**  
**Rabbit Polyclonal Antibody**  
**Catalog # AI14722****Specification**

---

**RBMX Antibody - C-terminal region - Product Information**

Application	WB
Primary Accession	<a href="#">P38159</a>
Other Accession	<a href="#">NM_002139</a> , <a href="#">NP_002130</a>
Reactivity	Human, Mouse, Rat, Rabbit, Pig, Horse, Bovine, Guinea Pig, Dog
Predicted	Human, Mouse, Rat, Rabbit, Pig, Horse, Bovine, Guinea Pig, Dog
Host	Rabbit
Clonality	Polyclonal
Calculated MW	42kDa KDa

**RBMX Antibody - C-terminal region - Additional Information****Gene ID** 27316**Alias Symbol** HNRPG, RBMXP1, RBMXRT, RNMX, hnRNP-G**Other Names**

RNA-binding motif protein, X chromosome, Glycoprotein p43, Heterogeneous nuclear ribonucleoprotein G, hnRNP G, RNA-binding motif protein, X chromosome, N-terminally processed, RBMX, HNRPG, RBMXP1

**Format**

Liquid. Purified antibody supplied in 1x PBS buffer with 0.09% (w/v) sodium azide and 2% sucrose.

**Reconstitution & Storage**

Add 50 ul of distilled water. Final anti-RBMX antibody concentration is 1 mg/ml in PBS buffer with 2% sucrose. For longer periods of storage, store at 20°C. Avoid repeat freeze-thaw cycles.

**Precautions**

RBMX Antibody - C-terminal region is for research use only and not for use in diagnostic or therapeutic procedures.

**RBMX Antibody - C-terminal region - Protein Information****Name** RBMX**Synonyms** HNRPG, RBMXP1**Function**

RNA-binding protein that plays several role in the regulation of pre- and post-transcriptional processes. Implicated in tissue- specific regulation of gene transcription and alternative splicing of

several pre-mRNAs. Binds to and stimulates transcription from the tumor suppressor TXNIP gene promoter; may thus be involved in tumor suppression. When associated with SAFB, binds to and stimulates transcription from the SREBF1 promoter. Associates with nascent mRNAs transcribed by RNA polymerase II. Component of the supraspliceosome complex that regulates pre-mRNA alternative splice site selection. Can either activate or suppress exon inclusion; acts additively with TRA2B to promote exon 7 inclusion of the survival motor neuron SMN2. Represses the splicing of MAPT/Tau exon 10. Binds preferentially to single-stranded 5'-CC[A/C]-rich RNA sequence motifs localized in a single-stranded conformation; probably binds RNA as a homodimer. Binds non-specifically to pre-mRNAs. Also plays a role in the cytoplasmic TNFR1 trafficking pathways; promotes both the IL-1-beta-mediated inducible proteolytic cleavage of TNFR1 ectodomains and the release of TNFR1 exosome-like vesicles to the extracellular compartment.

#### Cellular Location

Nucleus Note=Component of ribonucleosomes. Localizes in numerous small granules in the nucleus

#### Tissue Location

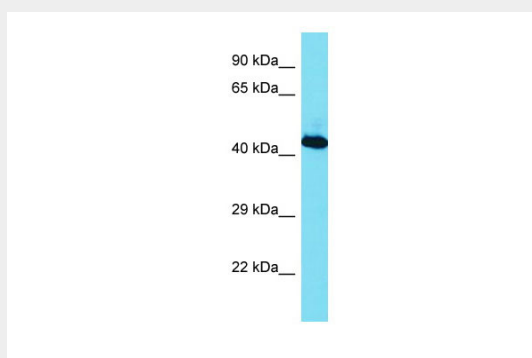
Expressed strongly in oral keratinocytes, but only weakly detected in oral squamous cell carcinomas (at protein level)

### RBMX Antibody - C-terminal region - Protocols

Provided below are standard protocols that you may find useful for product applications.

- [Western Blot](#)
- [Blocking Peptides](#)
- [Dot Blot](#)
- [Immunohistochemistry](#)
- [Immunofluorescence](#)
- [Immunoprecipitation](#)
- [Flow Cytometry](#)
- [Cell Culture](#)

### RBMX Antibody - C-terminal region - Images



Host: Rabbit

Target Name: RBMX

Sample Tissue: Jurkat Whole cell lysate

s

Antibody Dilution: 1.0µg/ml RBMX is supported by BioGPS gene expression data to be expressed in Jurkat

### RBMX Antibody - C-terminal region - References

Soulard M.,et al.Nucleic Acids Res. 21:4210-4217(1993).  
Venables J.P.,et al.Submitted (JUN-1998) to the EMBL/GenBank/DDBJ databases.  
Lingenfelter P.A.,et al.Mamm. Genome 12:538-545(2001).  
Lin T.-Y.,et al.Submitted (NOV-2003) to the EMBL/GenBank/DDBJ databases.  
Ota T.,et al.Nat. Genet. 36:40-45(2004).